

E.A.C. BEARING SYSTEM (Elevation Alignment Compensation)

In addition to the standard line of bearings manufactured by **AMSCOT Structural Products Corporation**, we have taken the features of the Adjustable Structural bearings and the Self-Aligning Concept and combined the two to make an E.A.C. Bearing system. This bearing not only gives the design engineer the ability to have perfect alignment at the sliding surface, but it also allows for field adjustment, compensating for the differential setting of standard steel and concrete members and the uneven loading conditions caused by this action. In addition it will accommodate slight differences in elevation during erection.

Specification: Bearing shall be E.A.C. Bearing AB-EAC-510 as manufactured by **AMSCOT Structural Products Corporation**.

Note: "Elevation Compensating Bearing Detail"

Standard bearing designations for slide bearing assembly are as follows:

AB-EAC-150 (150 KIP), AB-EAC-230 (230 KIP),
AB-EAC-350 (350 KIP), AB-EAC-510 (510 KIP).

For non-standard loadings, please consult our engineering department for assistance.

Standard Elevation ("X") is 6", With + 1" of adjustment, elevation may be adjusted by changing thickness of plates ("Y") and ("Z").

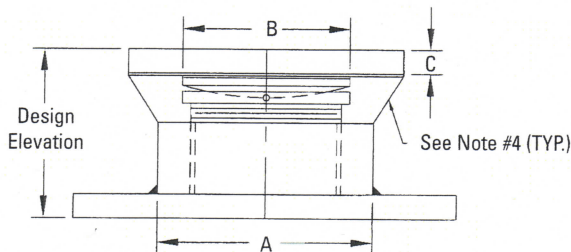
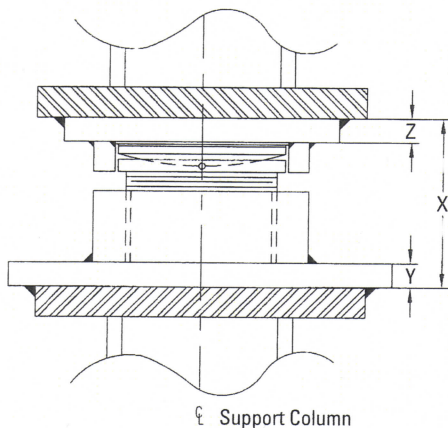
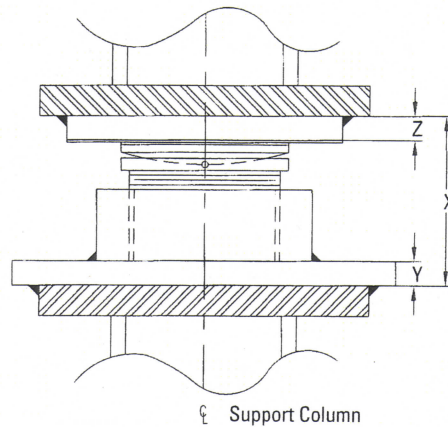
Standard method of installation is to insert elevation compensating bearing assembly, adjust elevation to fit space envelope, lock assembly with locking screw, weld into place with standard welding procedure.

On retrofit work, sole plate and base plate (shaded area) may be eliminated by increasing thickness of plates ("Y") and ("Z") accordingly and welding column directly to bearing assembly.

Design criteria for elevation compensating bearing is as follows;

Operating temperature: 500° F. Continuous Service;
Excursion temperature: 700° F. for 30 minutes;
Friction Factor: .03%;
Rotation: 3°

- Note:**
1. All material to be A588 unless otherwise noted.
 2. Slide bearing material to be AMMAX mechanically locked.
 3. Max. continuous service temperature 500° F.
 4. Cut 10 ga. retainers after installation.
 5. Adjustment $\pm 1/2"$



Style	A	B	C	Design Elevation	Load
AB-EAC-150	9" dia.	6-1/4" dia.	1/2"	6 ± 1/2"	150 kip
AB-EAC-230	9" dia.	6-1/4" sq.	1/2"	6 ± 1/2"	230 kip
AB-EAC-350	12" dia.	9-1/4" dia.	1/2"	6 ± 1/2"	350 kip
AB-EAC-510	12" dia.	9-1/4" sq.	1/2"	6 ± 1/2"	510 kip

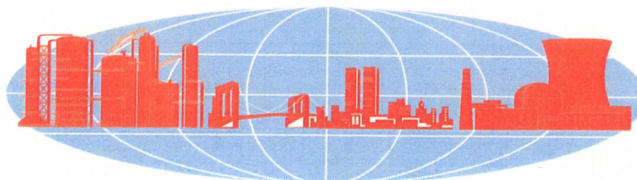
AMSCOT

STRUCTURAL PRODUCTS CORP.

A World of Structural Bearings
and Custom Fabricated Metal Components.

973-989-8800
www.AmscotNJ.com

*" The Quality Of The Past
The Innovation Of The Future. "*



E.A.C. BEARING SYSTEM